



## **NHSA Bold Leadership Series**

*A Head Start on Housing for America's Families*

August 11, 2022



# Agenda for today's session

---

- 2:00 **Welcome and Introductions**  
*Dr. Bergeron, NHSA Deputy Director of Community Engagement and Innovation.*
- 2:05 **Opening Remarks**  
*Elena Trueworthy, CT Head Start State Collaborative Director*  
*Mikyle Byrd, Executive Director of LULAC Head Start, Inc*
- 2:05 **Presentation, Q&A**  
*Ruth White, Executive Director, National Center of Housing & Child Welfare*
- 2:55 **Closing Remarks**

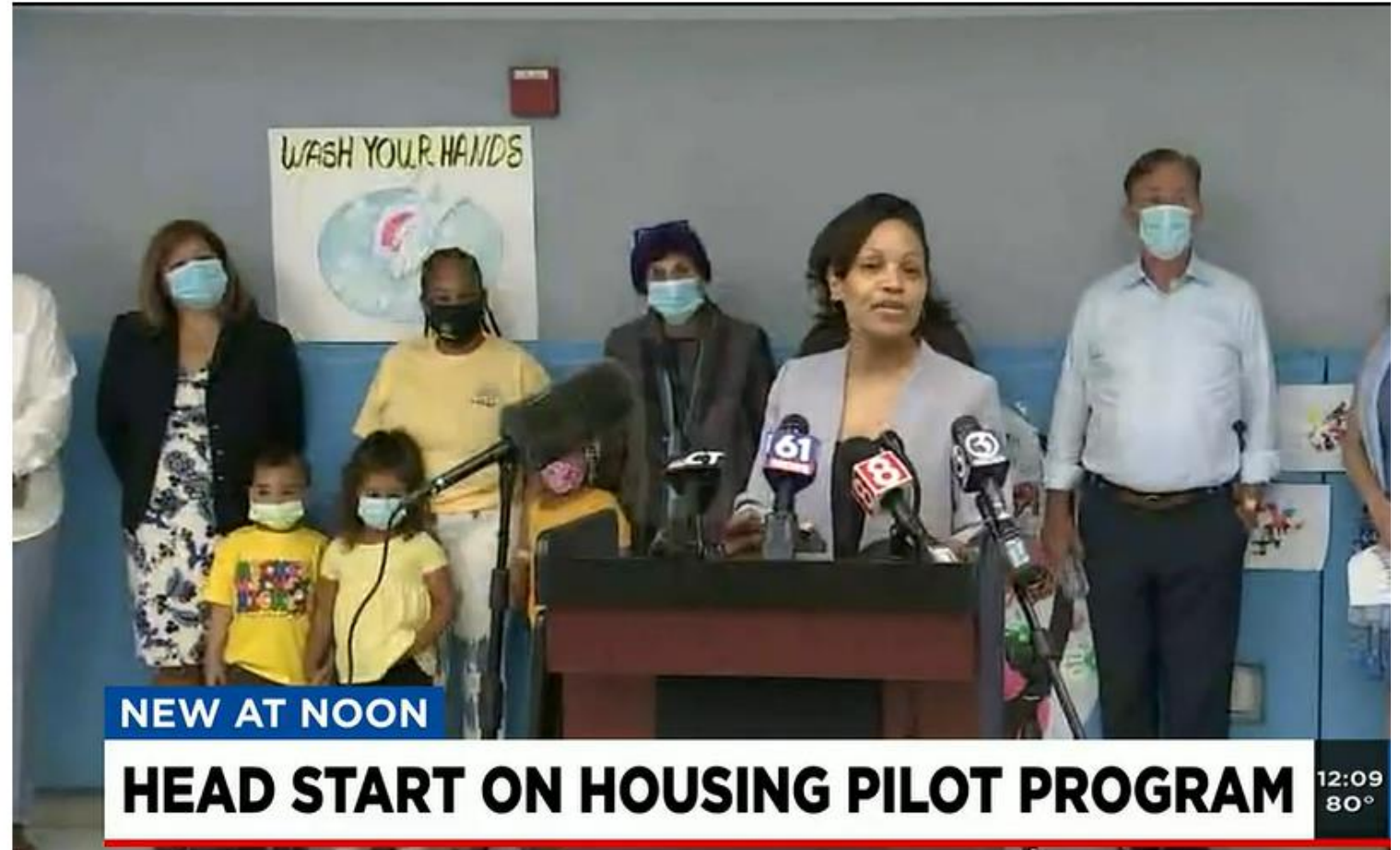




Elena Trueworthy, CT Head Start State Collaborative Director

Mikyle Byrd,  
Executive  
Director of  
LULAC Head  
Start, Inc

---





Betsy Cronin, the woman on the left, originally thought of tying housing and Head Start.

# How do communities give Families a “Head Start on Housing”?

Head Start on Housing is a cross-agency collaboration to expedite access to permanent housing subsidies for Head Start households, increase the pool of landlords renting to young families, and enhance the educational performance of homeless and precariously housed children.

This effort is supported through a partnership between the Connecticut Office of Early Childhood, Connecticut Department of Housing, Connecticut Head Start State Collaboration Office, Connecticut Head Start Association, and the National Center for Housing and Child Welfare.



## HSH capitalizes on the multi-faceted approach of Head Start Agencies nationwide

- NCHCW sought to create and expand housing options that Head Start agencies and staff can tap on behalf of families because of the comprehensive, flexible, and responsive nature of the services provided by Head Start agencies nationwide.
- And the ability of Centers to set up partnerships quickly and efficiently.

Head Start and Early Head Start Programs support families & children's growth in a positive learning environment through a variety of services, which include:

- **Early learning and development:** Children's readiness for school and beyond is fostered through individualized learning experiences. Through relationships with adults, play, and planned and spontaneous instruction, children grow in many aspects of development. These include social skills, emotional well-being, language and literacy skills, mathematics, and science concepts. Early learning experiences also include the cultural and language heritage of each child and family in relevant ways. Parents, including grandparents, foster parents, and other primary caregivers, are recognized as children's first and most influential teachers. Their knowledge of their children is central to each child's individualized approach. Additionally, Head Start programs work with families, school districts and other entities to facilitate a smooth transition to kindergarten for each child.
- **Health:** Health and physical development are crucial for early learning opportunities that require children to fully explore and experience their environment. Head Start programs provide safe and healthy learning experiences indoors and outside. All children receive health screenings and nutritious meals, and programs connect families with medical, dental, and mental health services to ensure children are receiving the care and attention they need. Children receive support for building resiliency to cope with possible adverse effects of trauma. Families also receive mental health consultation focused on each child's needs.
- **Family well-being:** Parents and families are offered program services to support family well-being and to achieve family goals, such as housing stability, continued education, and financial security. Programs support and strengthen parent-child relationships and engage families in the learning and development of their child.







## § 1302.53 Community partnerships and coordination with other early childhood and education programs.

### (a) *Community partnerships.*

- (1) A program must establish ongoing collaborative relationships and partnerships with community organizations such as establishing joint agreements, procedures, or contracts and arranging for onsite delivery of services as appropriate, to facilitate access to community services that are responsive to children's and families' needs and family partnership goals, and community needs and resources, as determined by the community assessment.
- (2) A program must establish necessary collaborative relationships and partnerships, with community organizations that may include:

§ 1302.53 Community partnerships and coordination with other early childhood and education programs.

(a) Community partnerships.

- (1) A program must establish ongoing collaborative relationships and partnerships with community organizations such as establishing joint agreements, procedures, or contracts and arranging for onsite delivery of services as appropriate, to facilitate access to community services that are responsive to children's and families' needs and family partnership goals, and community needs and resources, as determined by the community assessment.
- (2) A program must establish necessary collaborative relationships and partnerships, with community organizations that may include:
  - (i) Health care providers, including child and adult mental health professionals, Medicaid managed care networks, dentists, other health professionals, nutritional service providers, providers of prenatal and postnatal support, and substance abuse treatment providers;
  - (ii) Individuals and agencies that provide services to children with disabilities and their families, elementary schools, state preschool providers, and providers of child care services;
  - (iii) Family preservation and support services and child protective services and any other agency to which child abuse must be reported under state or tribal law;
  - (iv) Educational and cultural institutions, such as libraries and museums, for both children and families;
  - (v) Temporary Assistance for Needy Families, nutrition assistance agencies, workforce development and training programs, adult or family literacy, adult education, and post-secondary education institutions, and agencies or financial institutions that provide asset-building education, products and services to enhance family financial stability and savings;
  - (vi) Housing assistance agencies and providers of support for children and families experiencing homelessness, including the local educational agency liaison designated under section 722(g)(1)(J)(ii) of the McKinney-Vento Homeless Assistance Act ([42 U.S.C. 11431 et seq.](#));
  - (vii) Domestic violence prevention and support providers; and,
  - (viii) Other organizations or businesses that may provide support and resources to families.



# Setting up the partnership step-by-step

- Tap the expertise and reach of the State HS Collaborative Office
- Start a conversation with your public housing agency directors
- Build the approach in phases
- Start with the “Ready to Go” Head Starts and then help them teach and support other centers with less need (or expertise)
- Secure resources for landlord recruitment – this will involve real estate agents (who act as brokers), perhaps a campaign (more on that in the next slide)
- Secure funding for transitory housing costs

# A HEAD START ON HOUSING FOR CT FAMILIES

---



IN COLLABORATION WITH

A statewide Landlord Recruitment  
Campaign

Making the case that HS families are a great investment

Families love stability. When you rent to a family with young children, you're looking at years of long-term tenants with little turnover.

### WHY RENT TO HEAD START FAMILIES?

- ◆ Head Start is a national program that promotes school readiness for infants, toddlers, and preschool-aged children
- ◆ Programs support the whole family with resources and mentors to be successful
- ◆ Rental assistance guarantees reliable, on-time payments

Interested in finding families to rent to?  
Would you like to be a part of this initiative?  
Call Betsy (XXX )XXX-XXXX.



Connecticut Office  
of Early Childhood

- Make this case to Landlords as well as your potential housing authority partner!

How does  
HSH  
expedite  
access to  
housing?

---

NCHCW recommends that each Head Start Agency establish a point person on housing. We refer to these folks as “Early Childhood Housing Outreach” professionals or “ECHO”

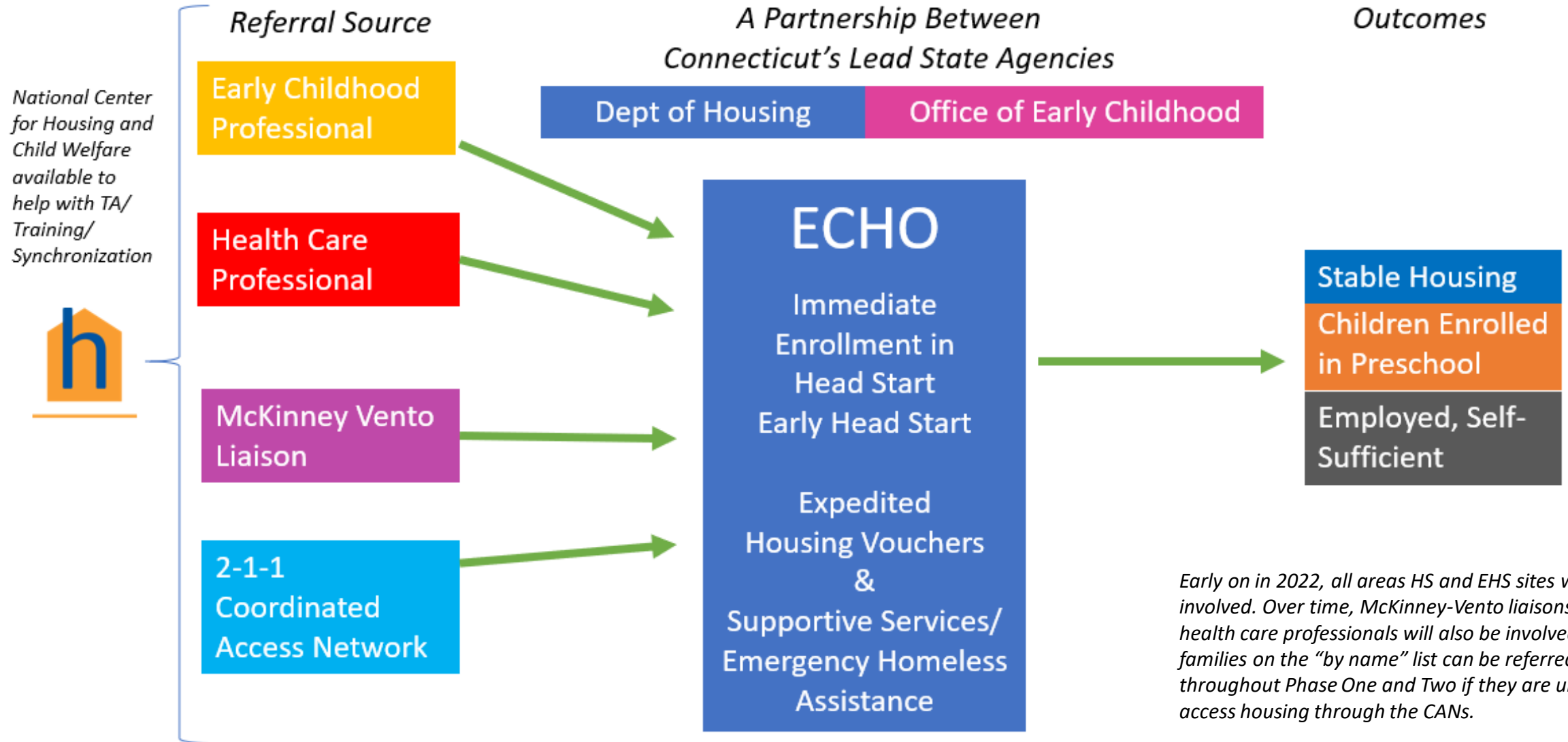
---

Once established, these staffers can work in tandem with Coordinated Entry or directly with the public housing authority staff to make referrals.

---

Soon, we would like to extend this network out in order to include McKinney-Vento Liaisons, staff within hospitals, and well, any professionals who are working with families.

# Early Childhood Housing Outreach (ECHO) Expedited Access to Resources



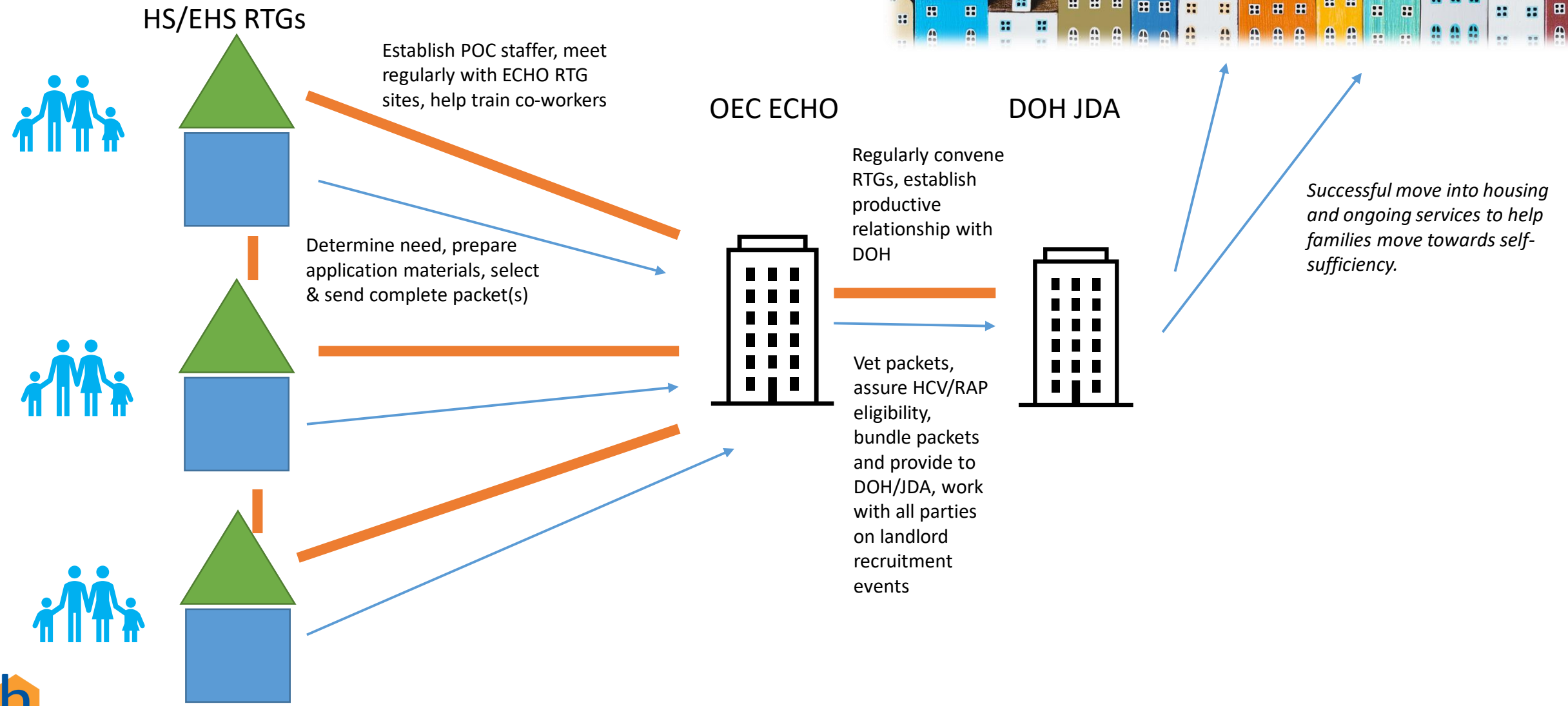
*Early on in 2022, all areas HS and EHS sites will be involved. Over time, McKinney-Vento liaisons and health care professionals will also be involved. Also, families on the "by name" list can be referred to ECHO throughout Phase One and Two if they are unable to access housing through the CANs.*



The stories are magical!



# Flow and Roles of the ECHO Referrals



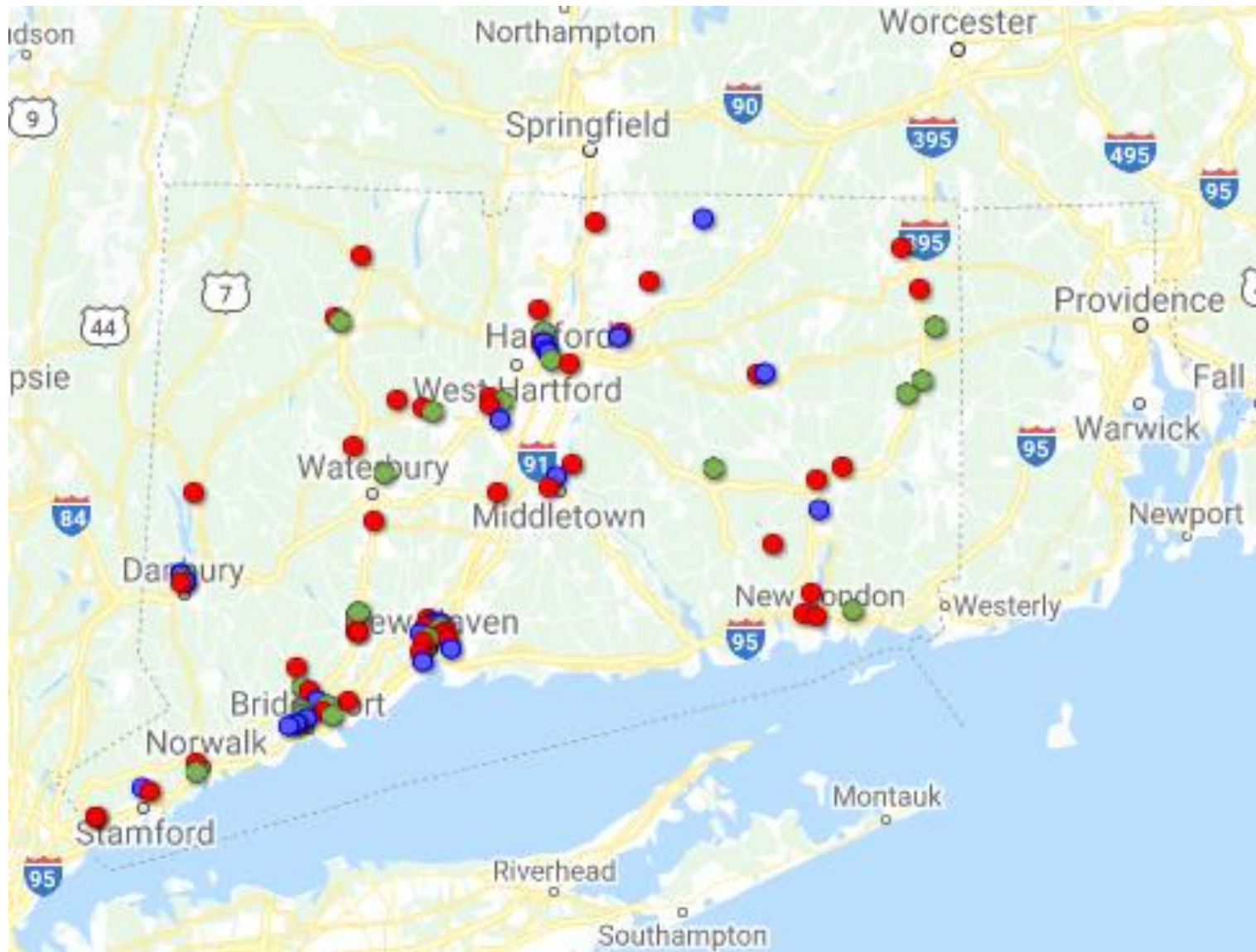
# We all have a role in helping families successfully accessing housing.

Family Role	HS ECHO Role	ECHO Team Role	Housing Agency Role
<ul style="list-style-type: none"><li>• Housing Search</li><li>• Be responsive to the PHA, LL, ECHO/HS</li><li>• Get documents in order</li><li>• Make a contribution towards security deposit and first month's rent</li></ul>	<ul style="list-style-type: none"><li>• Determining if family is already on the Section 8 Waiting list</li><li>• If family is not on the Section 8 Waiting List</li><li>• Landlord Recruitment</li></ul>	<ul style="list-style-type: none"><li>• To ensure successful lease up</li><li>• Coach staff on landlord recruitment</li><li>• Work alongside ECHO staff to recruit landlords, secure realtors if necessary</li><li>• Assist with accessing security deposit and first month's rent (transitory housing costs)</li></ul>	<ul style="list-style-type: none"><li>• Process applications</li><li>• Landlord Recruitment</li><li>• Inspect &amp; Approve apartments</li><li>• Pay Rent to Landlord on time</li></ul>

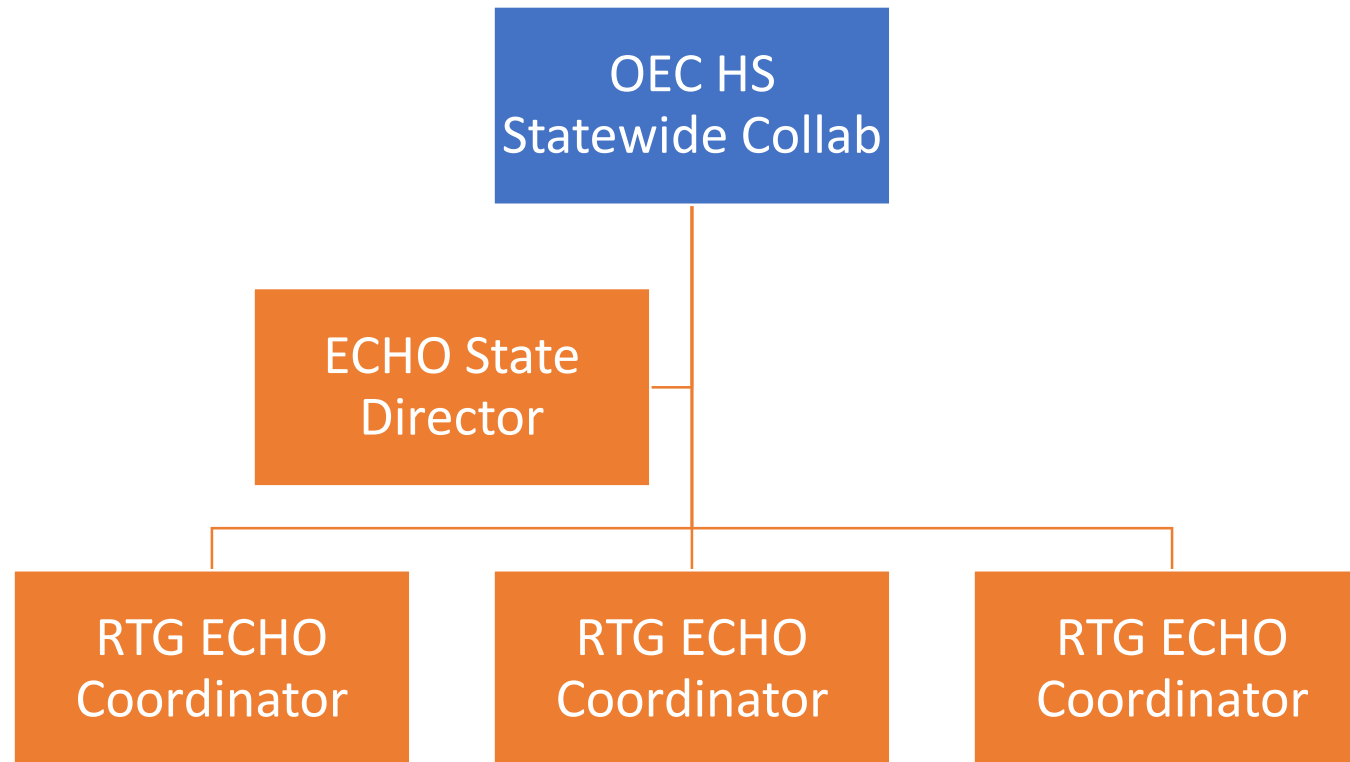


# Head Start and Early Head Start Centers in CT

---



# A Recommended Configuration for the HSH



# To learn more

National Center for Housing and Child Welfare

4707 Calvert Rd

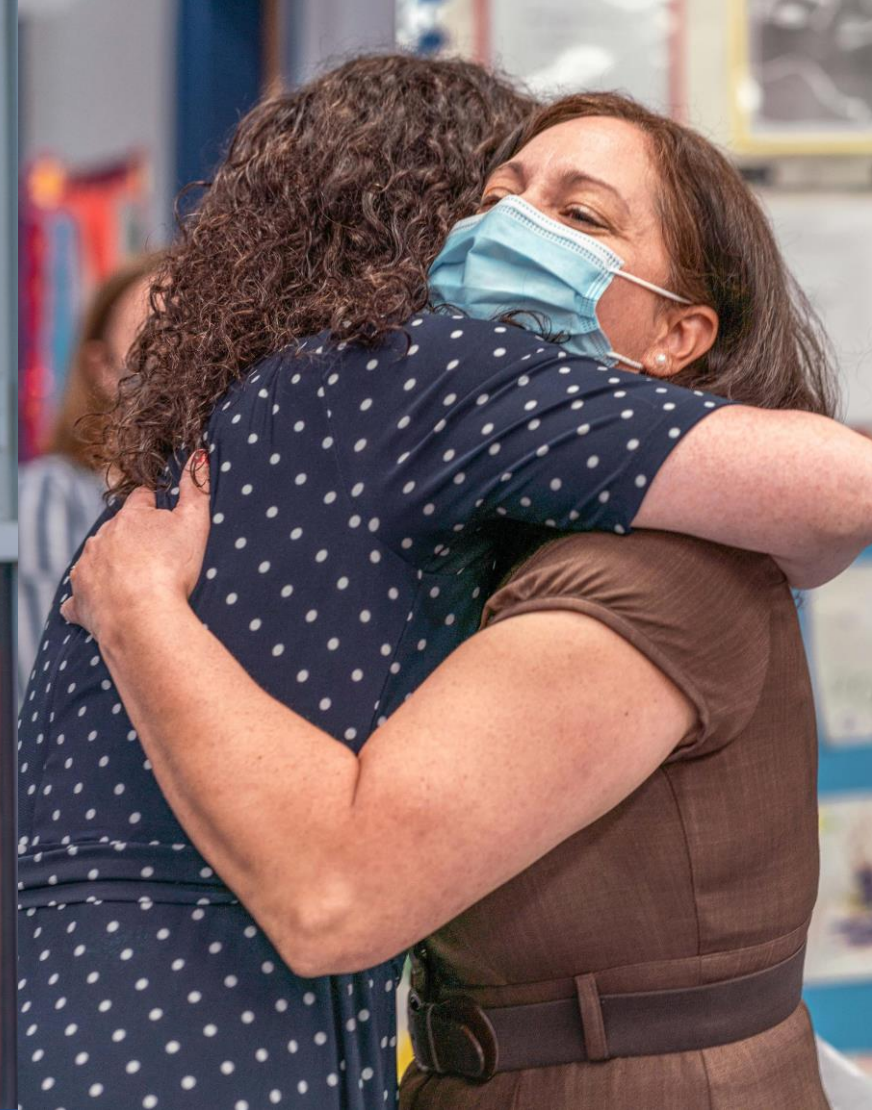
College Park, MD 20740

[www.nchcw.org](http://www.nchcw.org)

info@nchcw.org

rwhite@nchcw.org

301-699-0151



# Questions